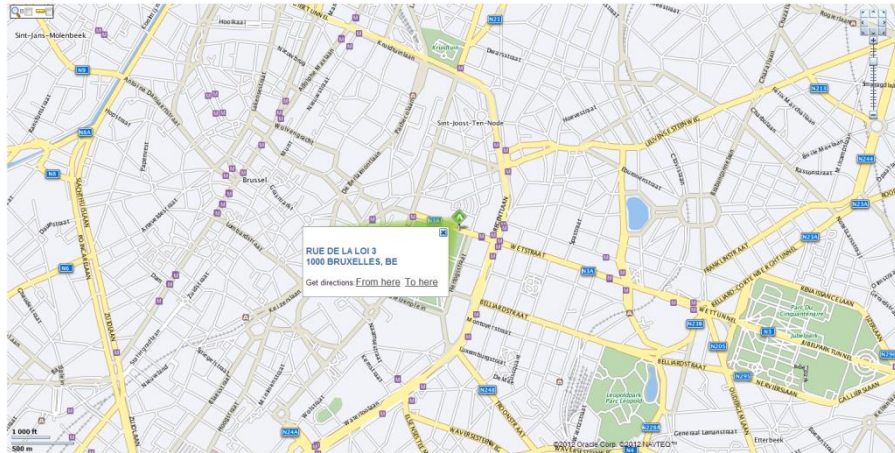


# Geocoder

## Description of the project

Geolocalisation (or georeferencing) is a technique to attribute geographical coordinates (longitude/latitude) to addresses. This makes it possible to **position each address on a map** for use in a Geographic Information System (GIS). Attribution of an address to geographical coordinates is known as reverse geocoding. Geocoding and reverse geocoding are both made possible by the **Oracle geocoder**. OSCARS can help you implement and use the Oracle geocoder.

## Illustration



Source : <http://elocation.oracle.com>

## Technologies and prerequisites

- Oracle Database Enterprise Edition
- Oracle Spatial Option
- Oracle MapViewer according to the case
- External data (Tomtom or Nokia) and/or owner's data

## References

Conseil Général du Bas-Rhin (CG67)  
Lille Métropole Communauté urbaine  
Tomtom

## Kit for implementation of the project

- Trainings: Oracle Spatial Essentials or a custom OSCARS course (1 to 5 days)
- Implementation of the Oracle geocoder (1 to 3 days)
- Loading of external data (1 to 3 days if data needs to be cut up)
- Loading of owner's data (5 to 15 days)
- Development of a web geocoding file application (1 to 5 days)

The number of days indicated is for guidance. Each project is different and may require a variable number of days. An estimate is required before the beginning of each project. In addition, this kit enables implementation of the project so that the customer can subsequently carry out the project autonomously. It is not an A to Z assessment of the project.

**OSCARS: Oracle Spatial Consulting And Resourcing Services**

Specialized and innovative company around Oracle Spatial



Specialized  
Oracle Spatial 11g



YOUR ORACLE SPATIAL EXPERT

**OSCARS S.A.**

66, route de Koerich • L-8437 Steinfort  
18A, rue de Han • B-5340 Strud

**[www.oscars-sa.eu](http://www.oscars-sa.eu)**